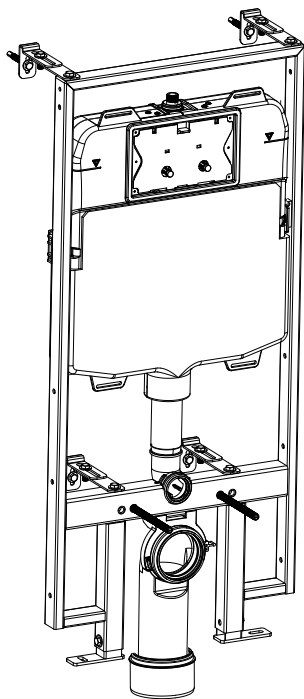


# Wellis®



EN

**Clarice built in cistern**  
INSTALLATION MANUAL

HU

**Clarice falsík mögötti WC tartály**  
SZERELÉSI ÚTMUTATÓ

DE

**Clarice in Zisterne gebaut**  
INSTALLATIONSANLEITUNG

FR

**Réservoir encastré Clarice**  
MANUEL D'INSTALLATION

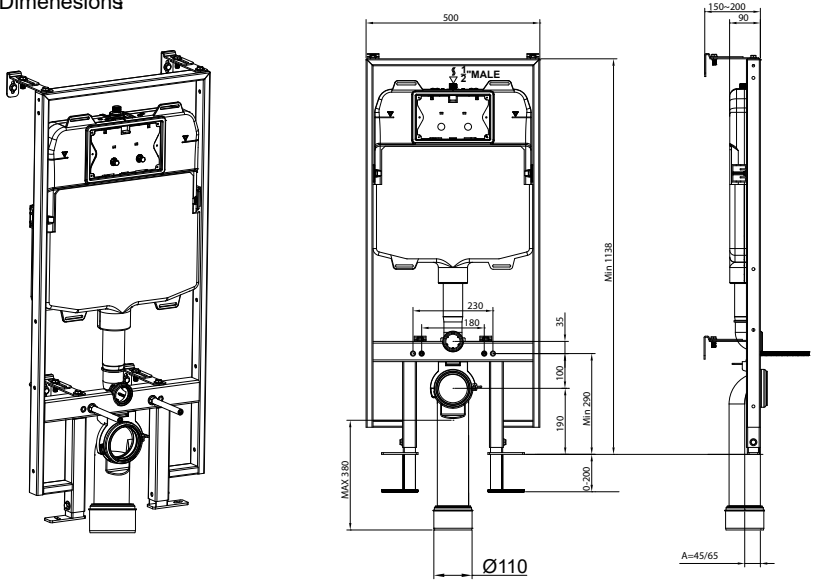
RO

**Rezervor WC încastrat în perete Clarice**  
INSTRUCȚIUNI DE MONTARE

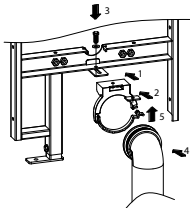
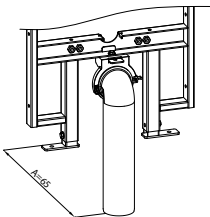
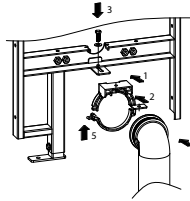
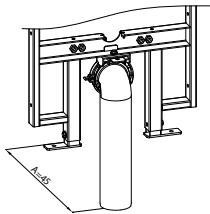
EE00273

**CLARICE**

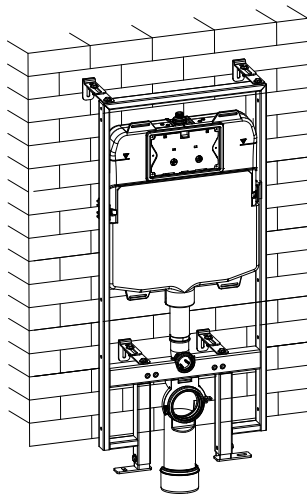
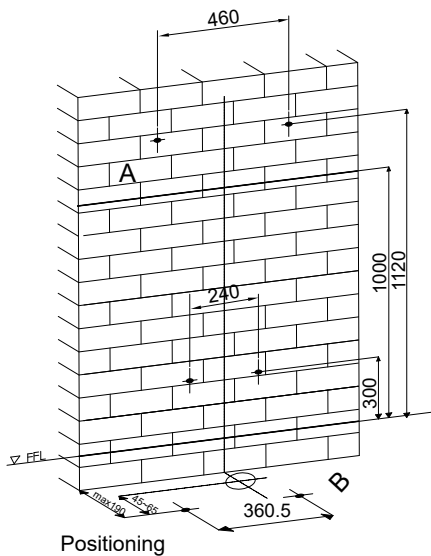
1、Dimensions



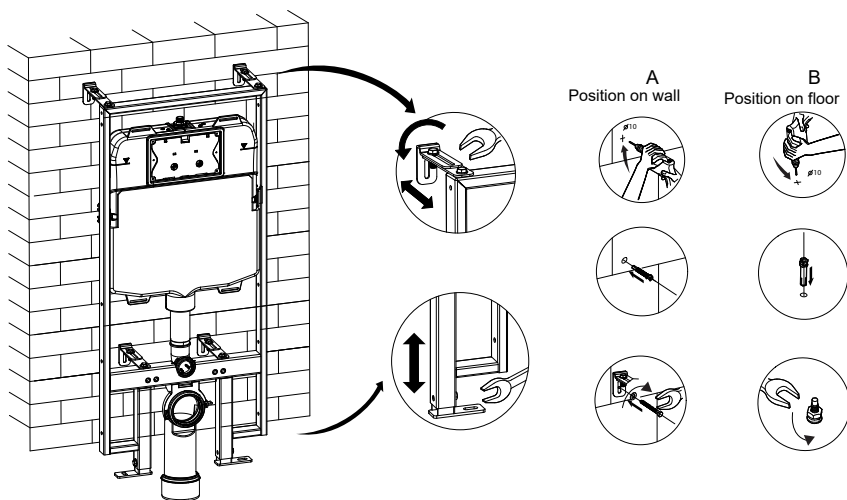
2、Installation of flush bend



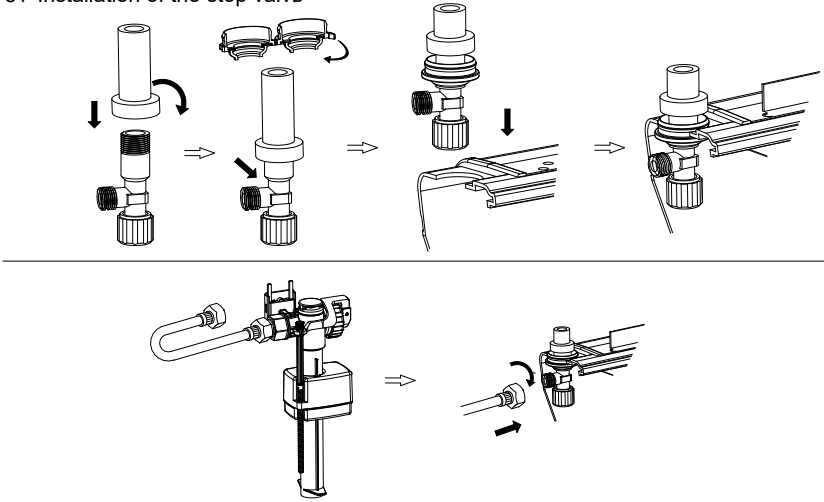
### 3. Installation of the cistern



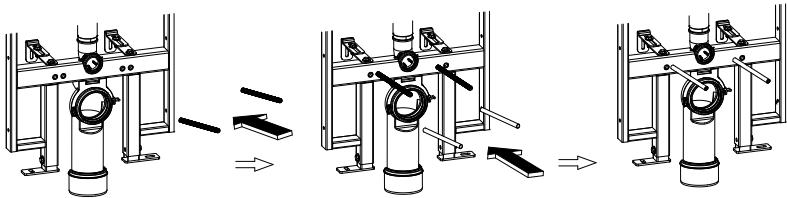
### 4. Adjust the frame



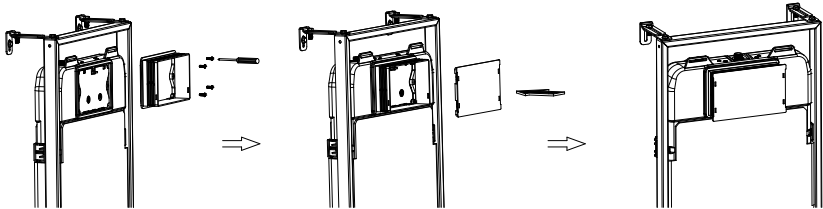
## 5. Installation of the stop valve



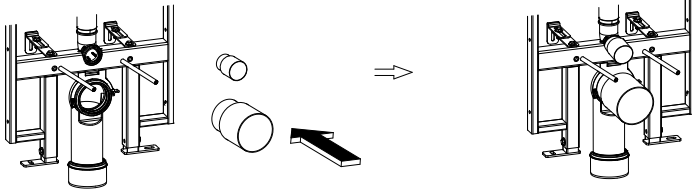
## 6. Installation of the threaded rod kits and flexible sheath



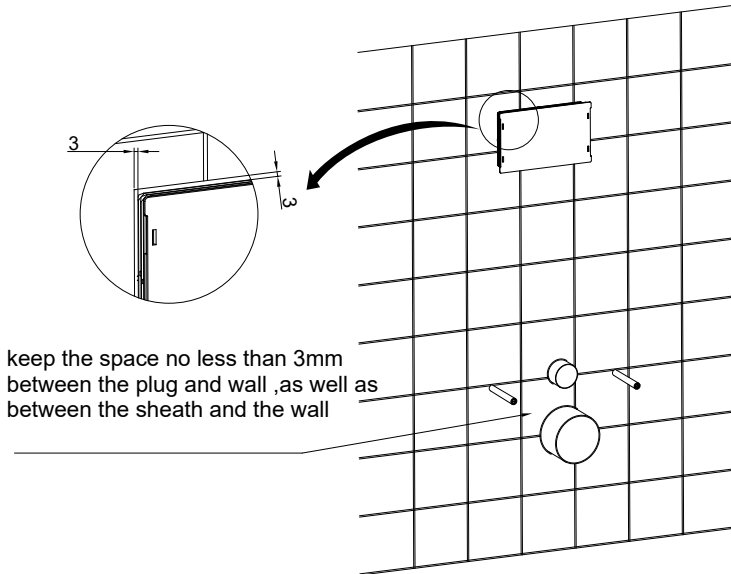
## 7. Installation of protective case



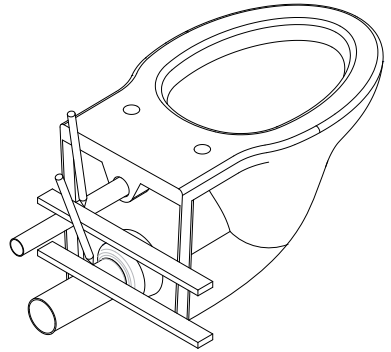
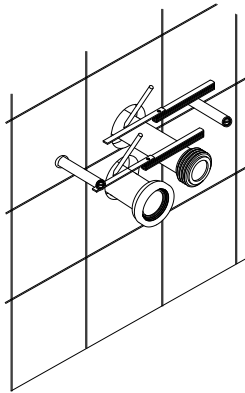
### 8、 Installation of bend plug



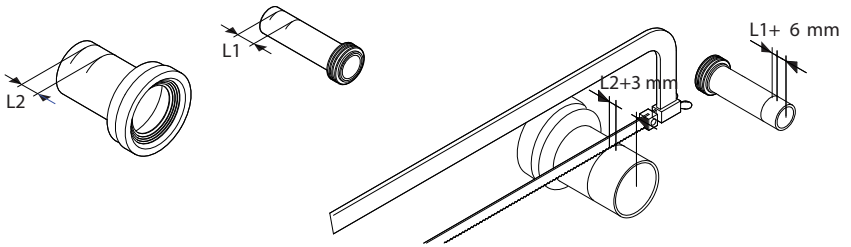
### 9、 Build the partition wall



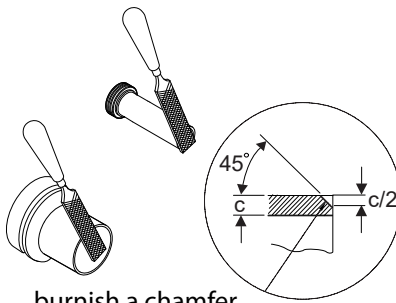
10、 Installation of the toilet :



Draw on the supply pipe and flush pipe

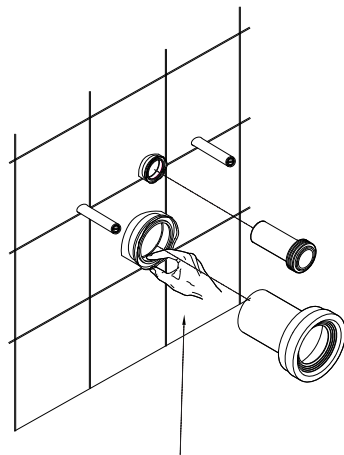


Reduce the supply pipe and flush pipe



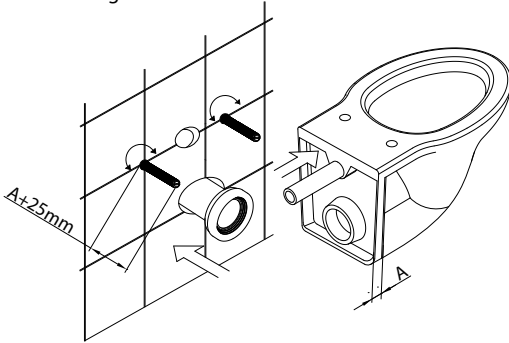
burnish a chamfer

Burnish a chamfer on the head face of the supply pipe and flush pipe

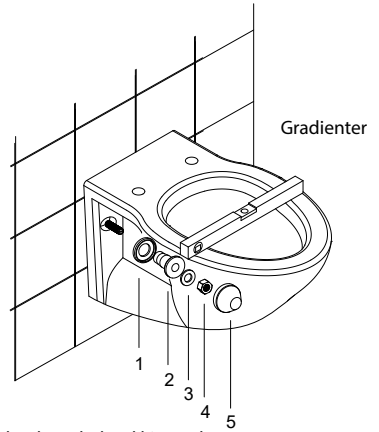


Apply silicon oil

### Fixing of the toilet

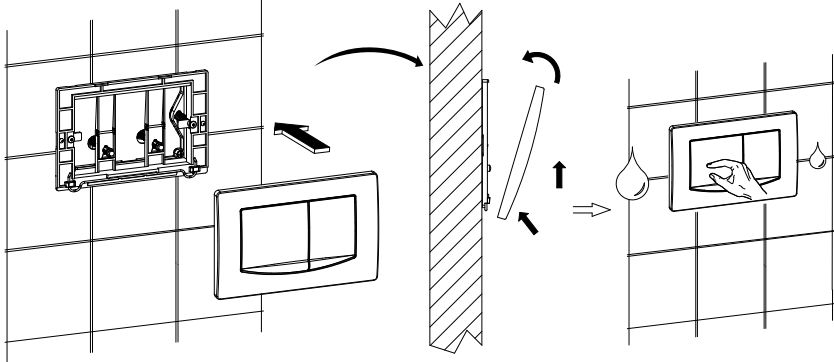


After removing flexible sheath, adjust the threaded rod exposed outside. Then fix the supply pipe onto toilet and the flush pipe onto wall.

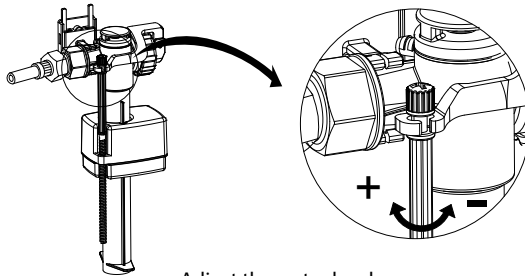


Fix the threaded rod kits and adjust the toilet to right position.

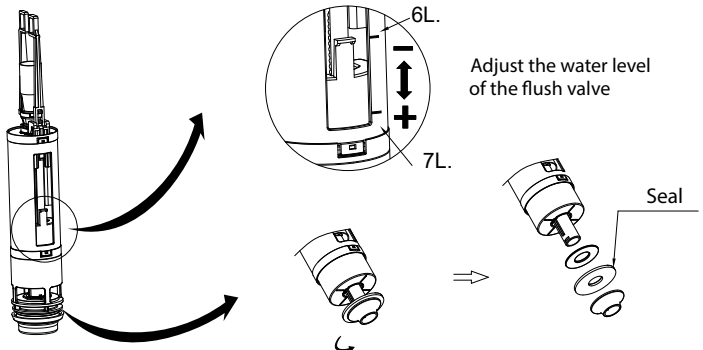
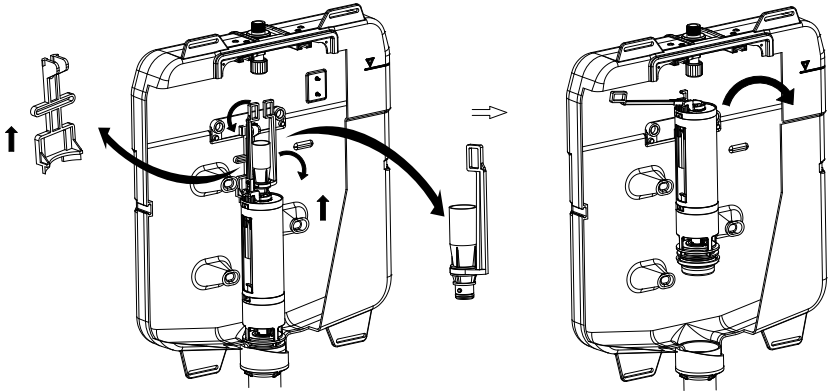
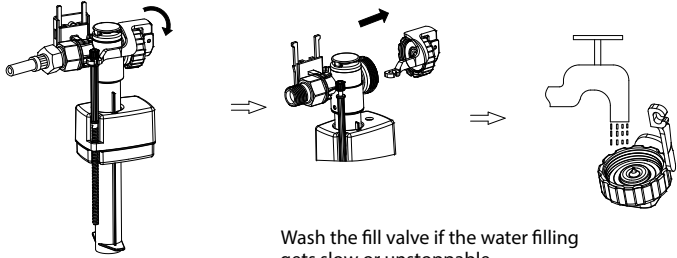
### 11. Installation of control plate :



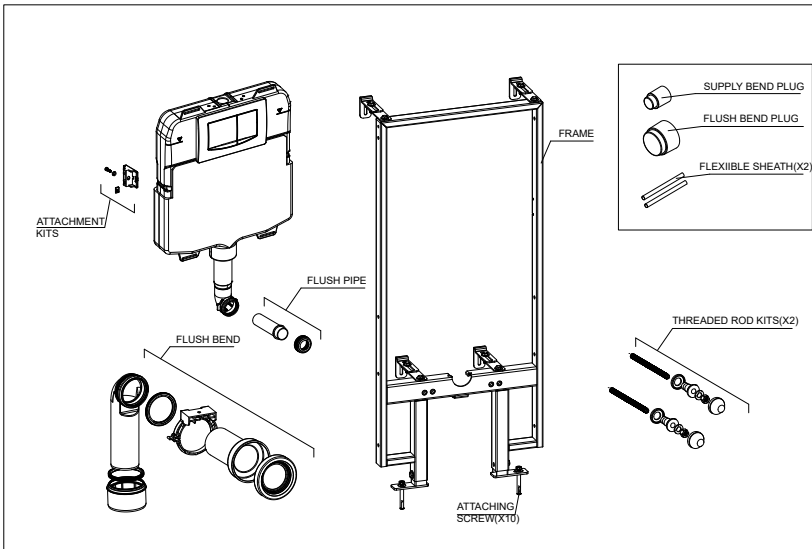
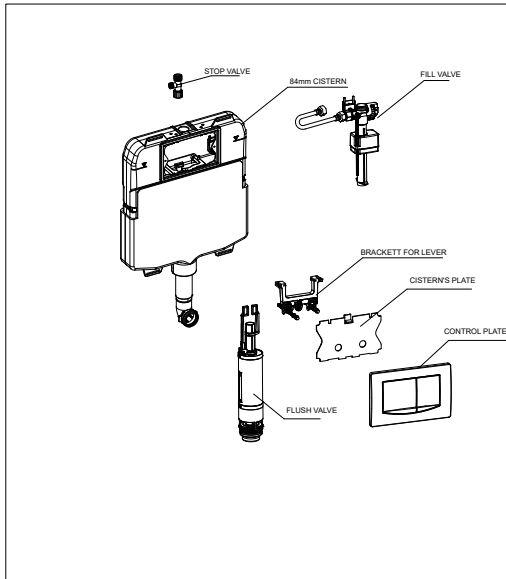
### 12. Maintenance of the cistern fittings :

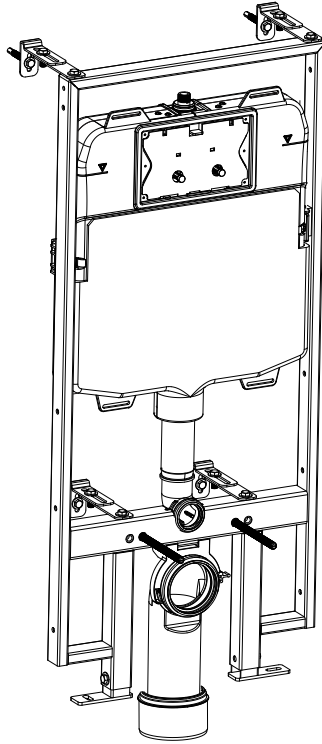


Adjust the water level



13. Spare parts :

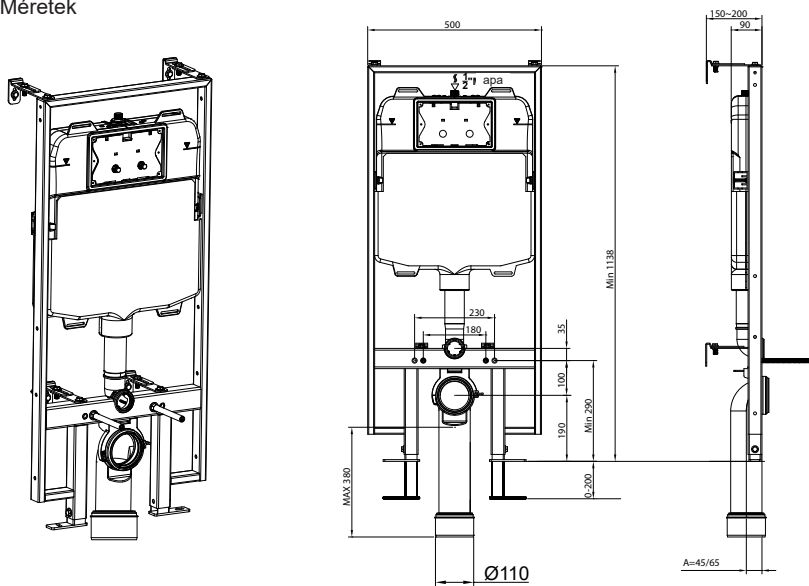




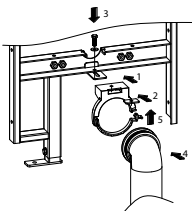
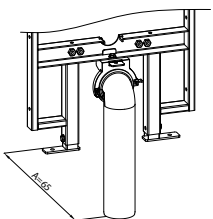
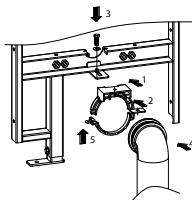
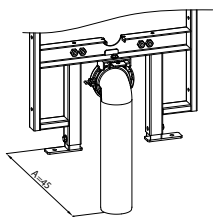
HU

## Clarice falsík mögötti WC tartály SZERELÉSI ÚTMUTATÓ

## 1. Méretek

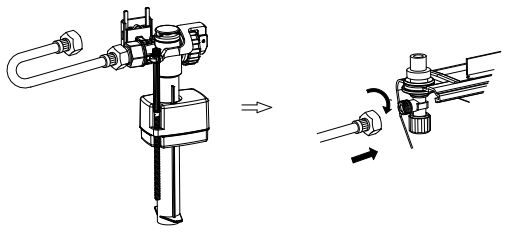
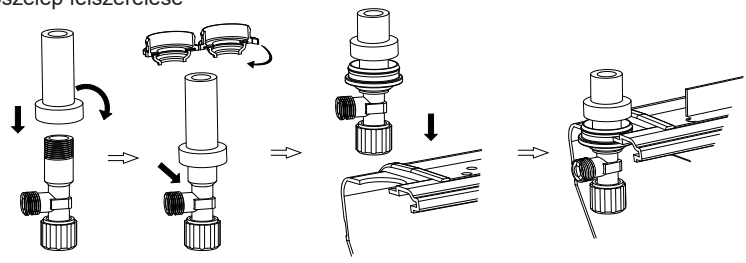


## 2. Az öblítőcső könyökének felszerelése

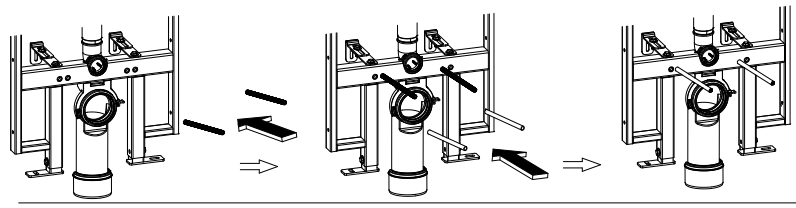




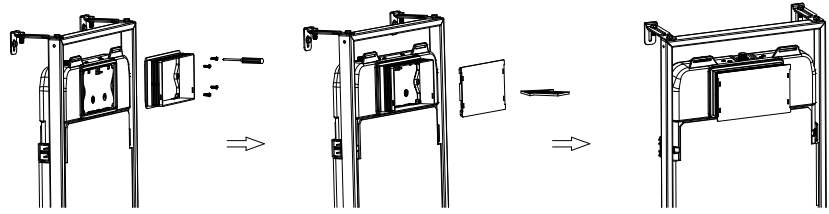
5. A zárószелеp felszerelése



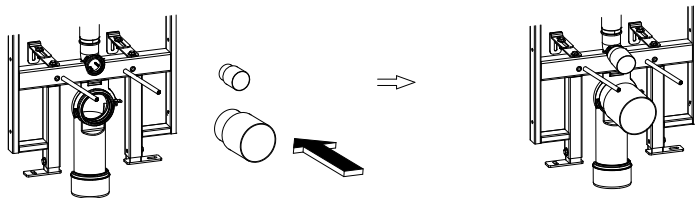
6. A menetes száraz és a rugalmas szorító hüvely felszerelése



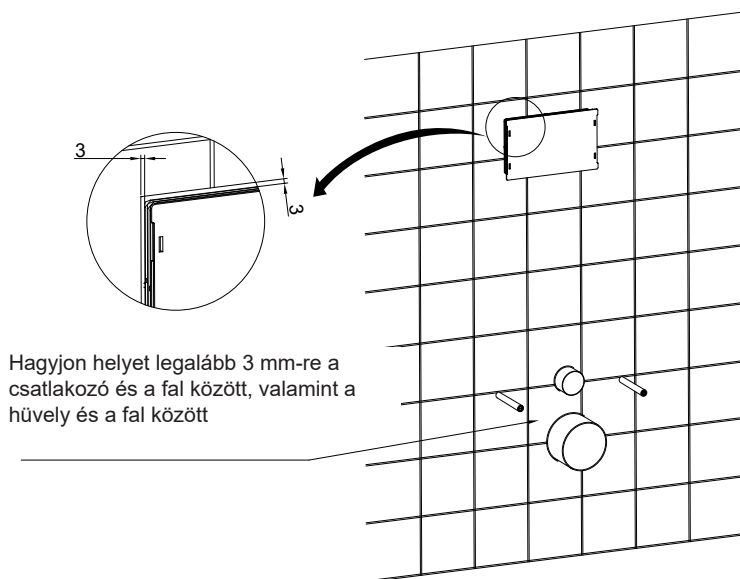
7. A védőburkolat felszerelése



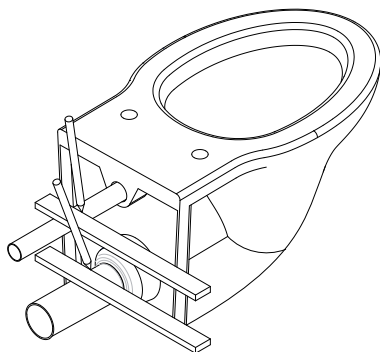
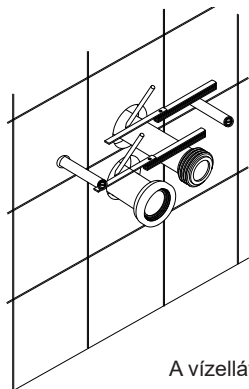
## 8. A könyökdugó felszerelése



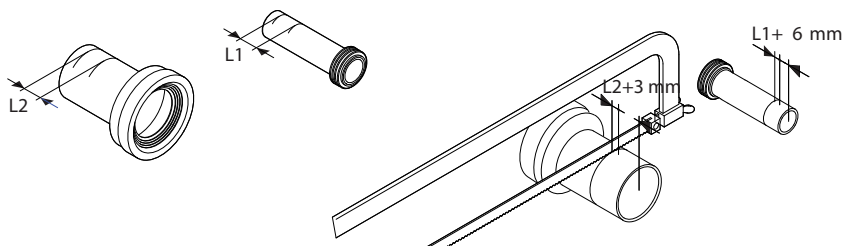
## 9. A válaszfal építése



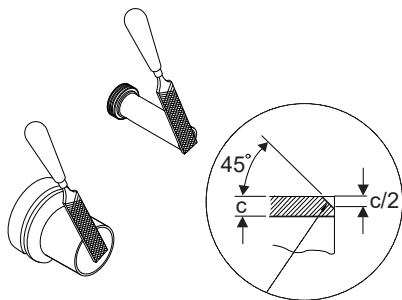
## 10. A WC felszerelése



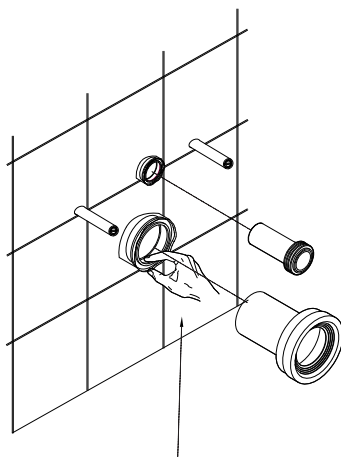
A vízellátás csővezetékét és az öblítőcsövet jelölje fel



A vízellátás csővezetékét és az öblítőcsövet vágja le

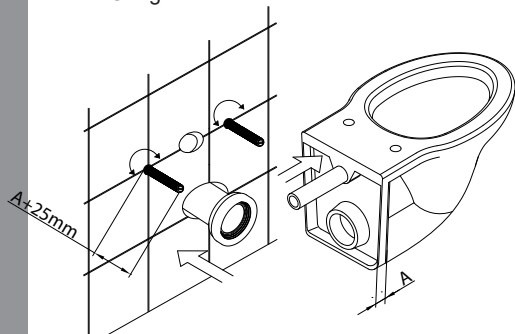


Csiszolja le a vízellátás csővezetékét és az öblítőcső elejét

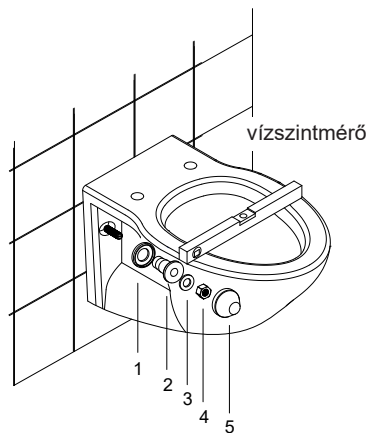


Alkalmazzon szilikonolajat

## A WC rögzítése

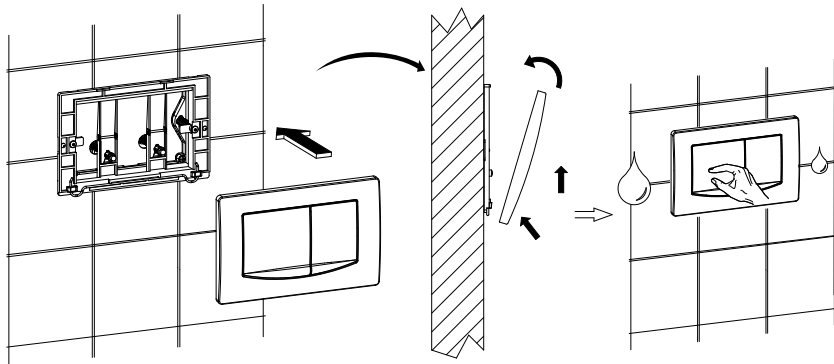


A rugalmas hüvely eltávolítása után állítsa be a menetes szár, amely kívülről elérhető. Ezután rögzítse a vízellátás csővezetékét a WC-re, az öblítőcsövet pedig a falra.

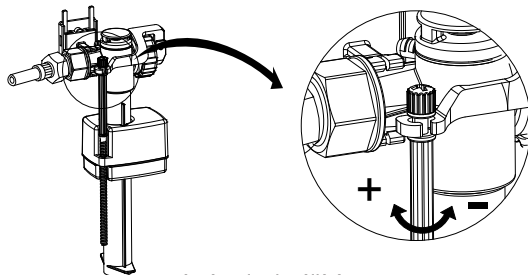


Rögzítse a menetes szárát, és igazítsa a WC-t a megfelelő pozícióba.

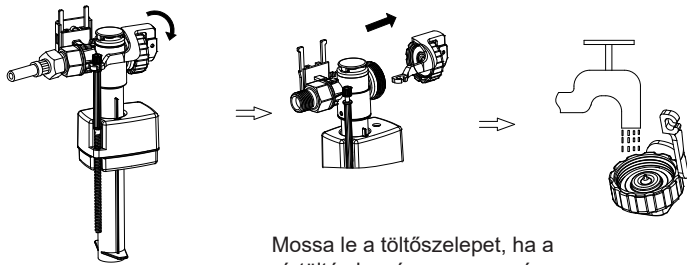
## 11. vezérlőpanel installálása



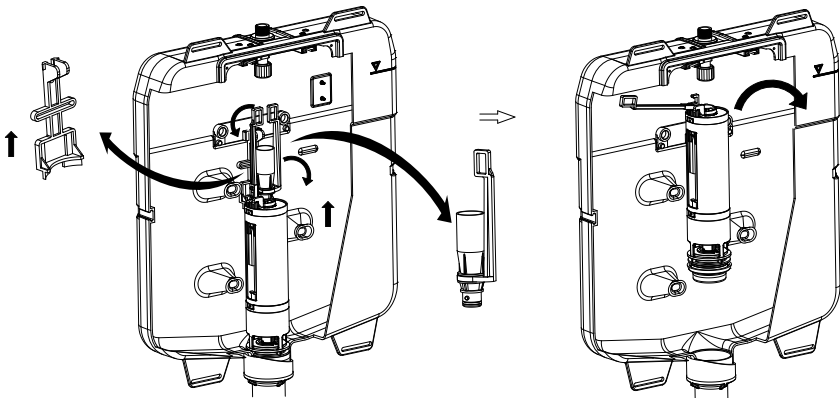
## 12. A tartály szerelvényeinek karbantartása



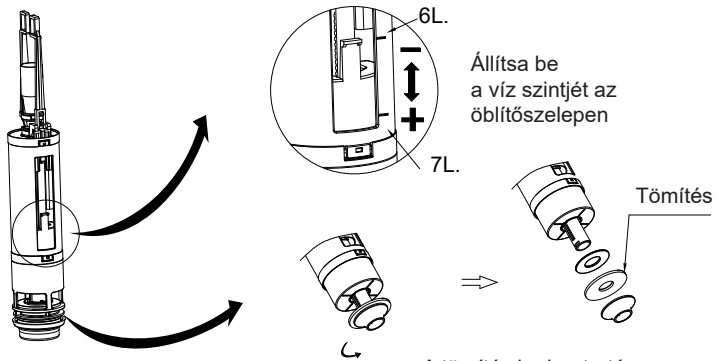
A vízszint beállítása



Mossa le a töltőszelepet, ha a víztöltés lassú vagy nem zár megfelelően

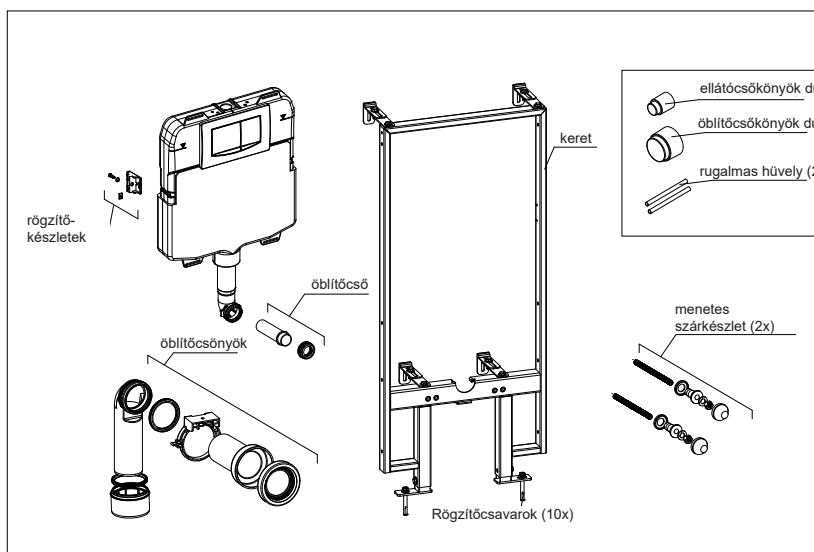
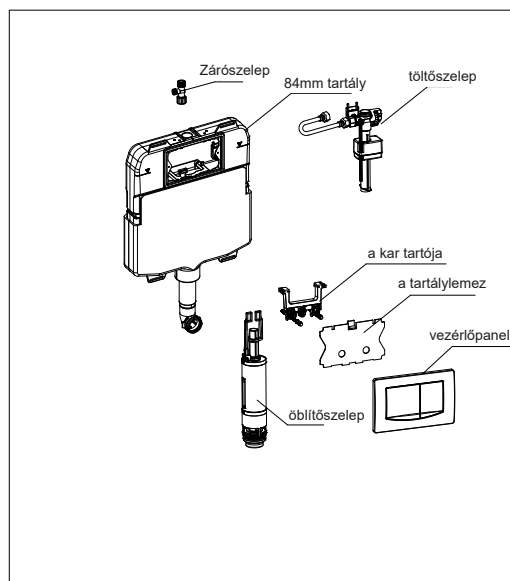


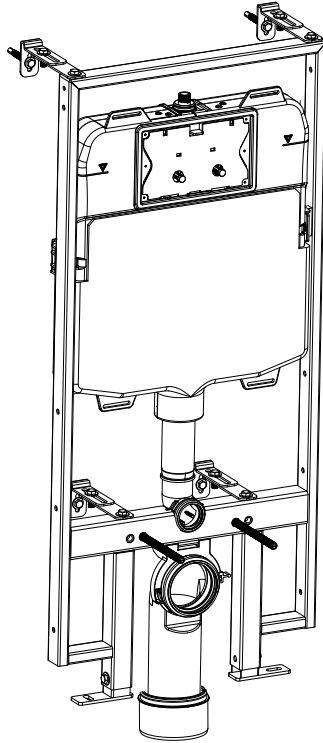
Az öblítőszelep felszerelése és eltávolítása



A tömítés karbantartása

### 13. Pótalkatrészek



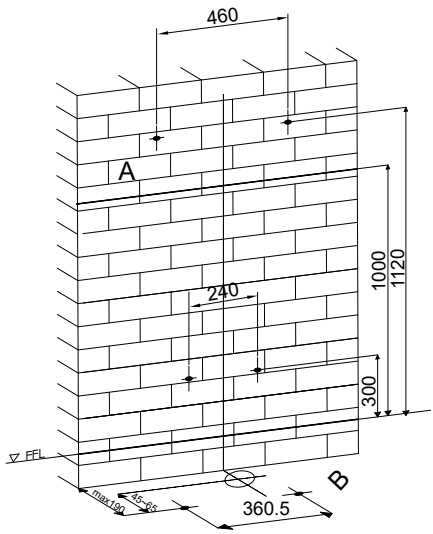


DE

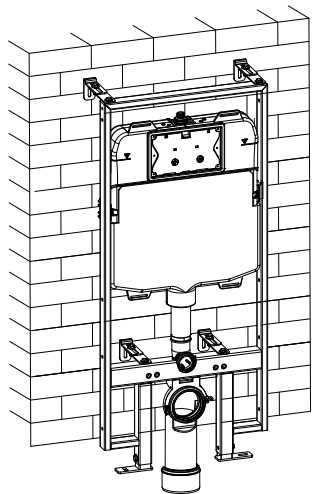
## **Clarice in Zisterne gebaut** INSTALLATIONSANLEITUNG



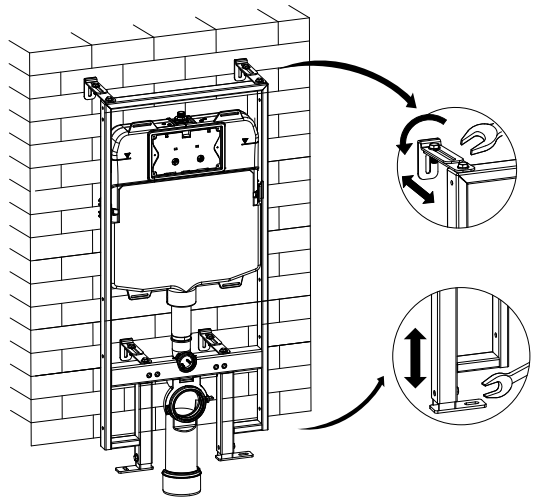
### 3. Installation der Zisterne



Positionierung



### 4. Rahmen ausrichten

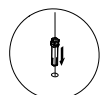
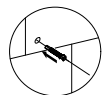


Platzierung an der Wand

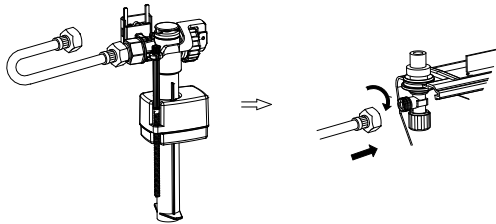
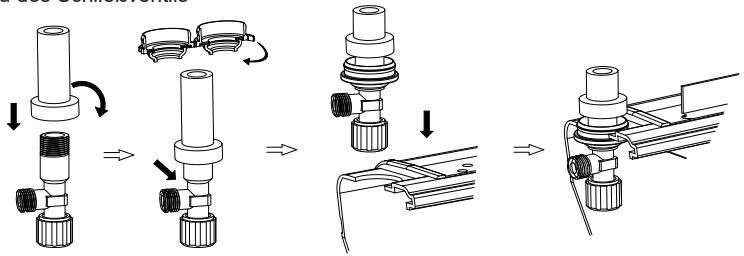
Platzierung auf dem Boden

A

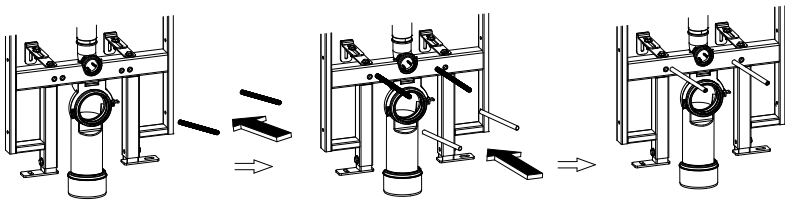
B



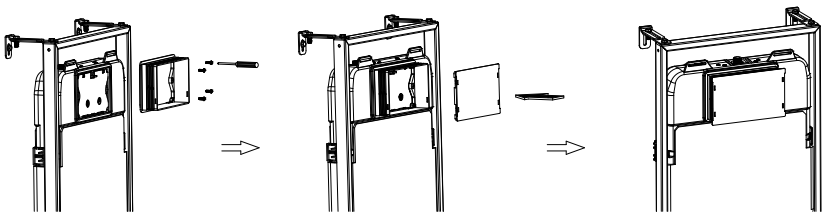
## 5. Einbau des Schließventils



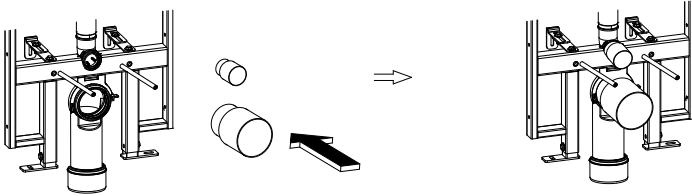
## 6. Montage der Gewindezapfen und der flexiblen Klemmhülse



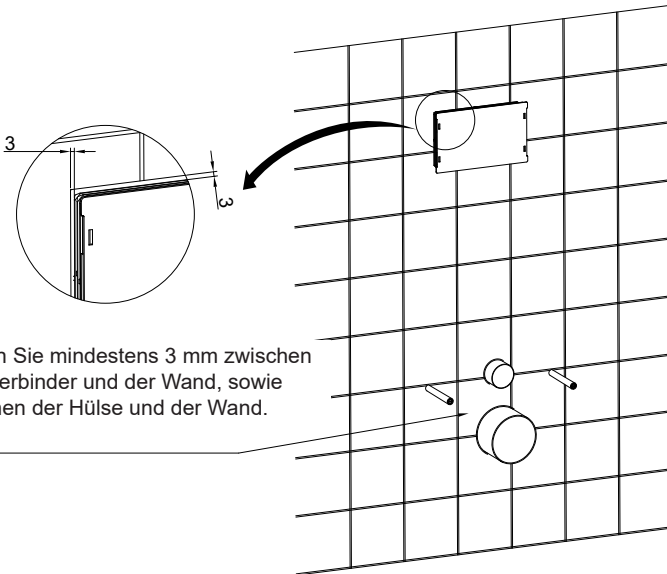
## 7. Installation der Schutzabdeckung



## 8. Einbau des Winkelsteckers

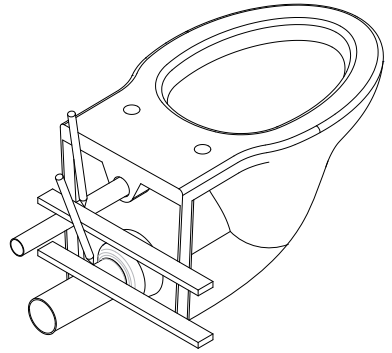
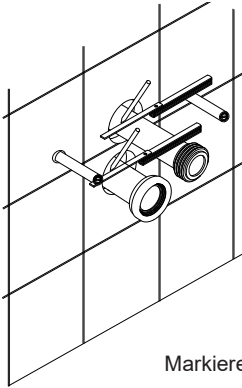


## 9. Aufbau der Trennwand

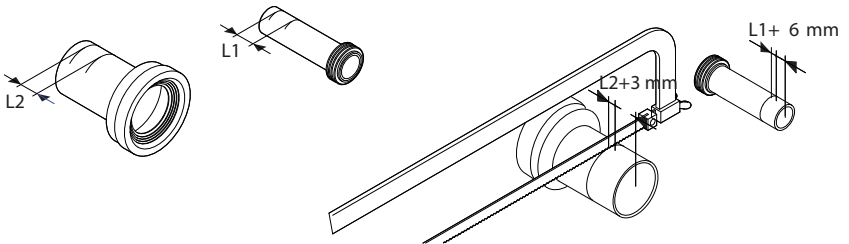


Lassen Sie mindestens 3 mm zwischen dem Verbinder und der Wand, sowie zwischen der Hülse und der Wand.

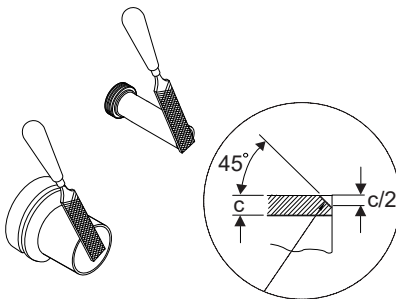
## 10. Montage des WC



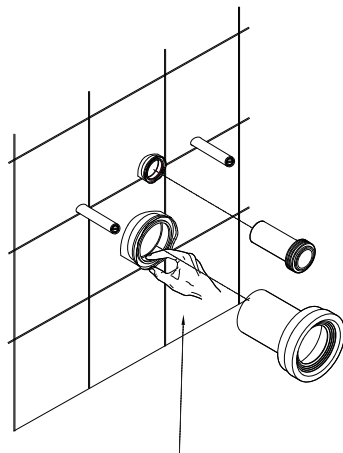
Markieren Sie die Wasserzufuhr- und die Spülleitung.



Schließen Sie die Wasserzufuhr- und die Spülleitung.

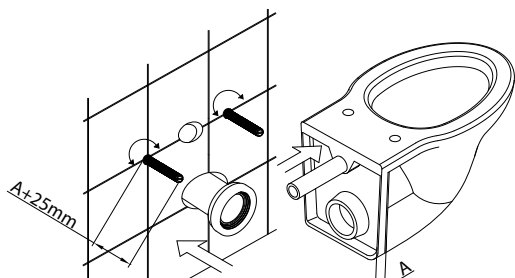


Schleifen Sie die Öffnung der Wasserzufuhr- und der Spülleitung.

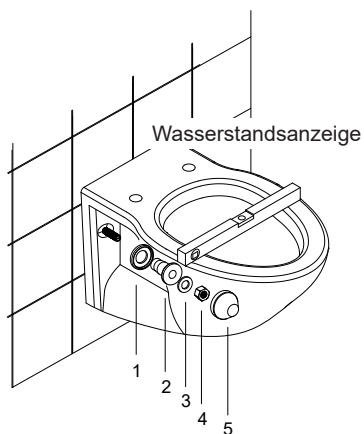


Silikonöl verwenden!

## Befestigung des WC

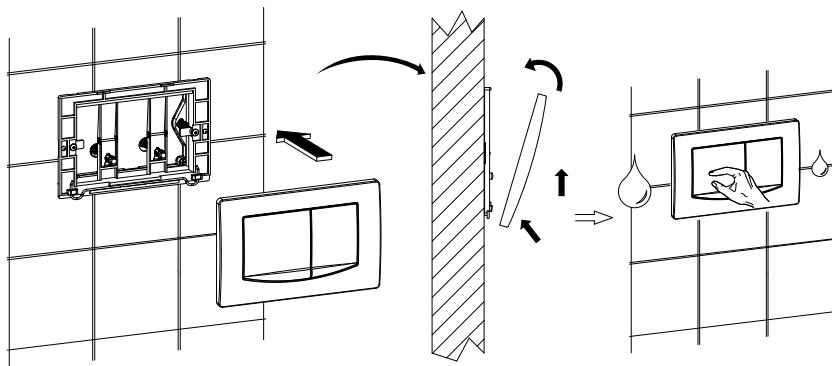


Nachdem Sie die elastische Hülse entfernt haben, schrauben Sie den von außen zugänglichen Gewindestift ein. Befestigen Sie dann das Wasserzulaufrohr an der Toilette und das Spülrohr an der Wand.

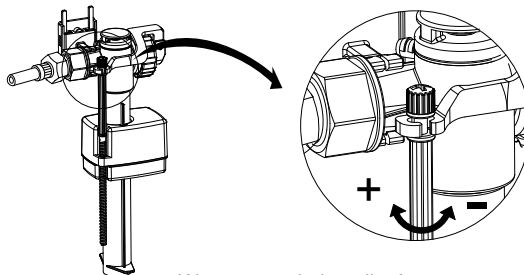


Befestigen Sie den Gewindestift und richten Sie das WC in der richtigen Position aus.

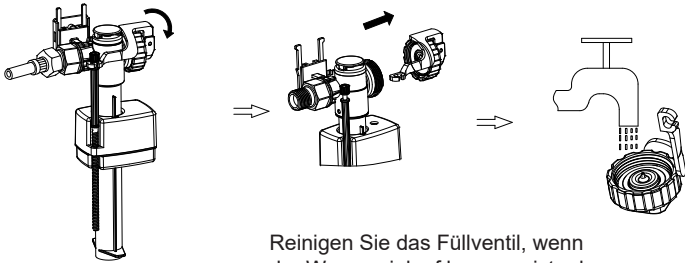
## 11. Installation des Bedienfelds



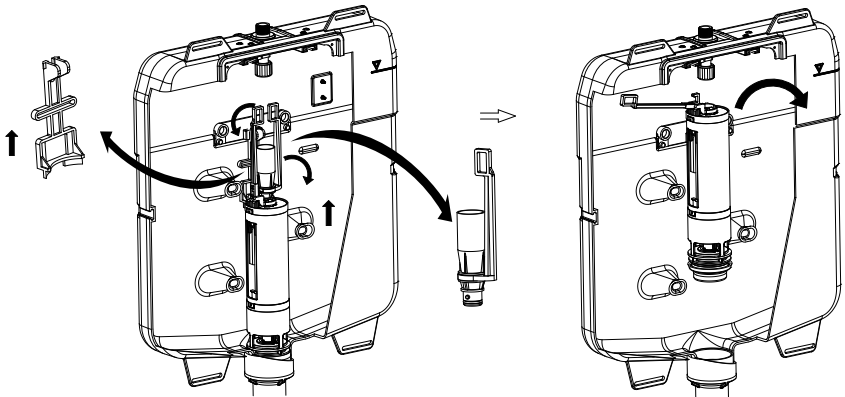
## 12. Wartung der Spülkastenarmaturen!



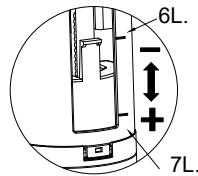
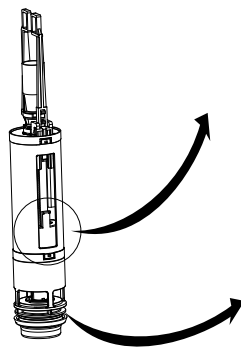
Wasserstand einstellen!



Reinigen Sie das Füllventil, wenn der Wassereinfluss langsam ist oder nicht richtig einrastet!



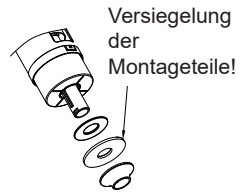
Montage des Spülventils!



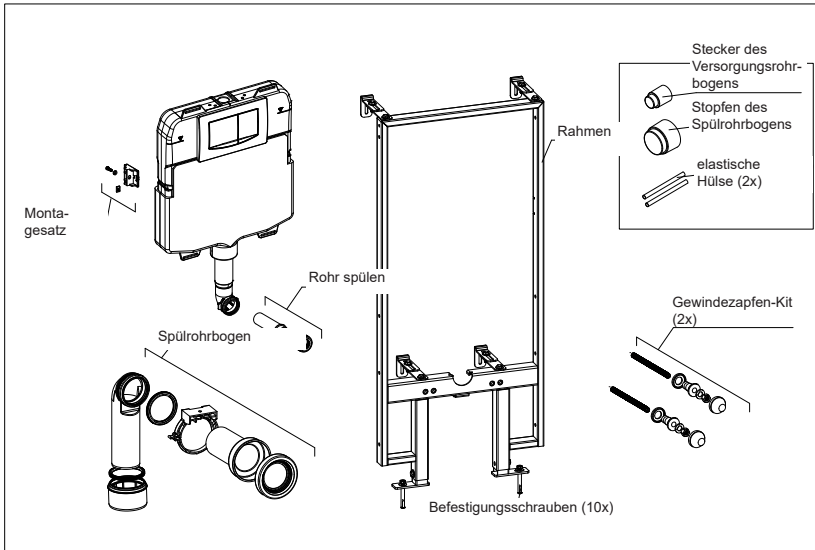
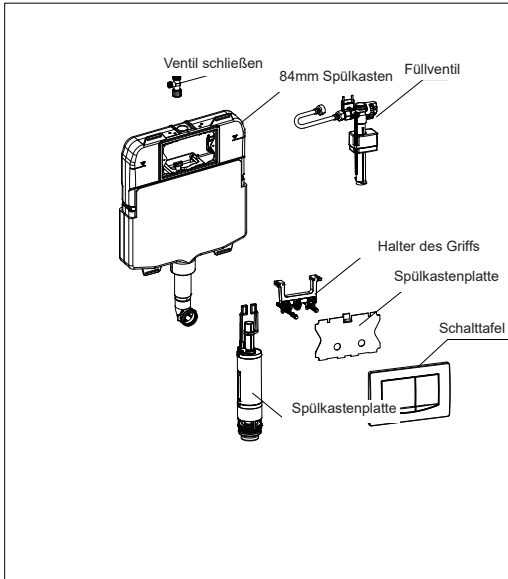
Stellen Sie den Wasserstand am Spülventil ein

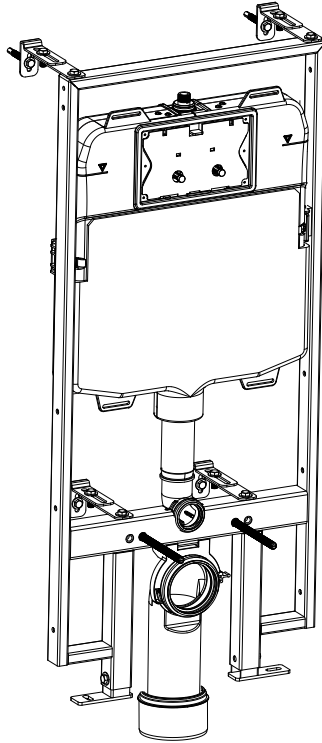


Wartung der Versiegelung



### 13. Ersatzteile



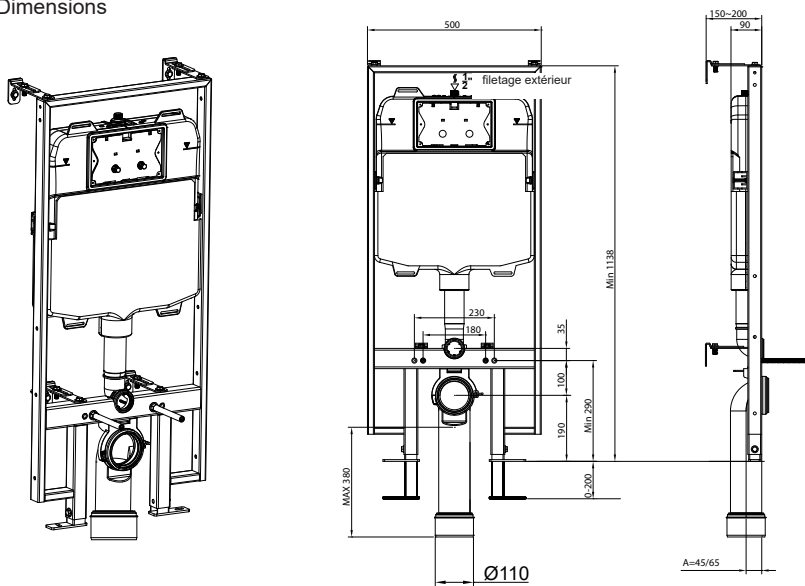


FR

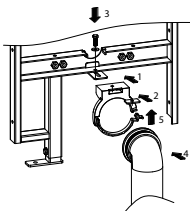
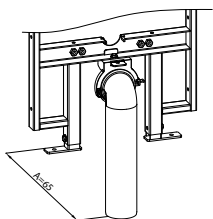
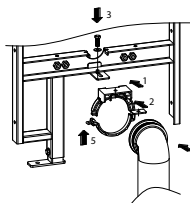
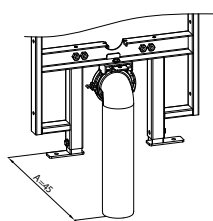
## Réservoir encastré Clarice

MANUEL D'INSTALLATION

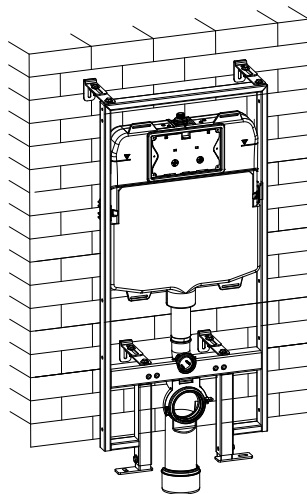
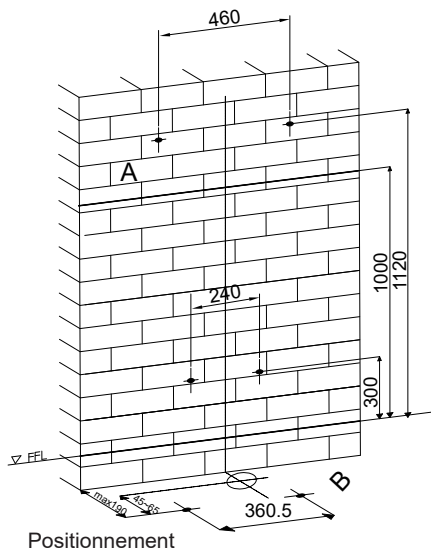
## 1. Dimensions



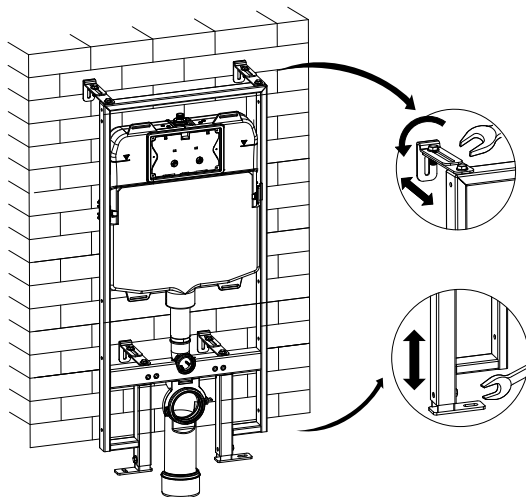
## 2. Montage du raccord coudé du tuyau d'évacuation



### 3. Installation du réservoir



### 4. Aligner le cadre



Montage au mur

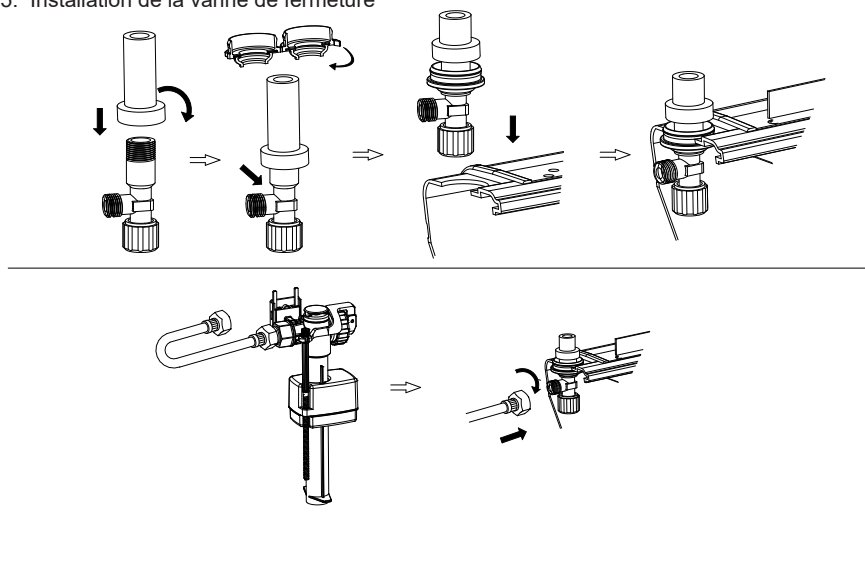
Montage au sol

A

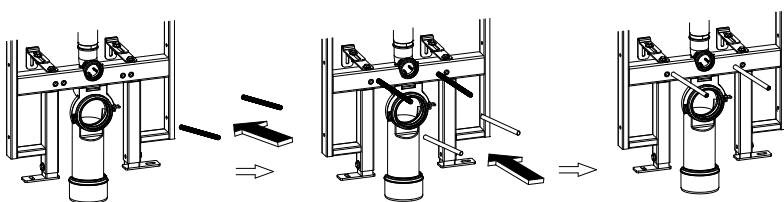
B



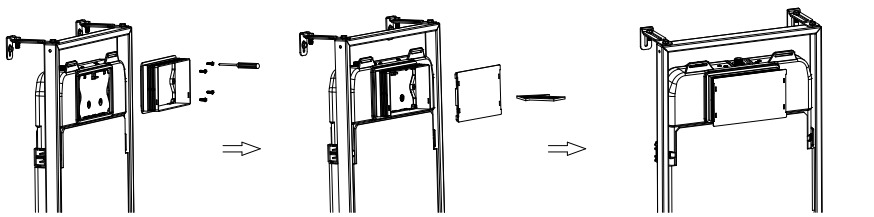
### 5. Installation de la vanne de fermeture



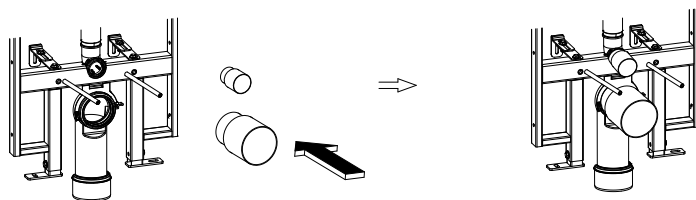
### 6. Montage des tiges filetées et du manchon de serrage flexible



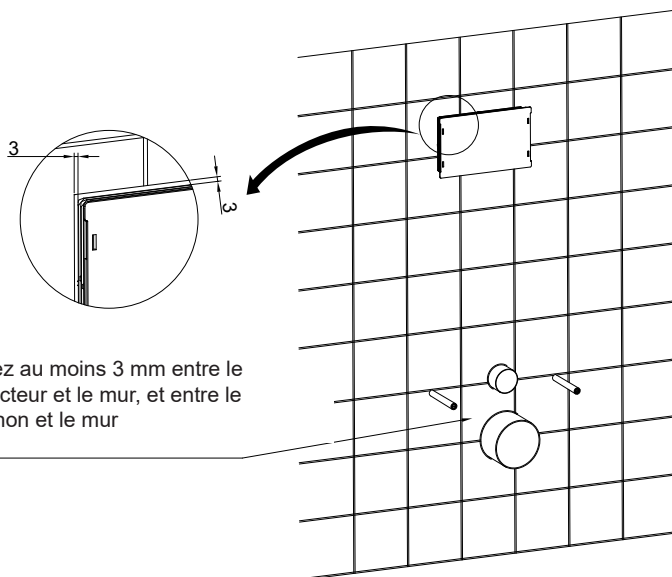
### 7. Installation du couvercle de protection



## 8. Installation du bouchon du raccord coudé

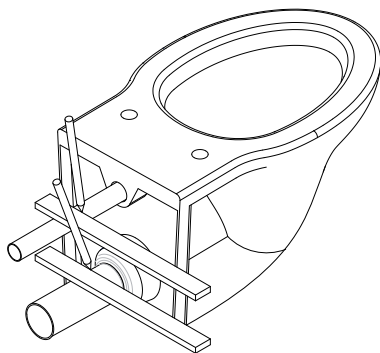
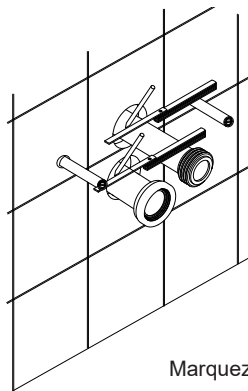


## 9. Construction de la cloison de séparation

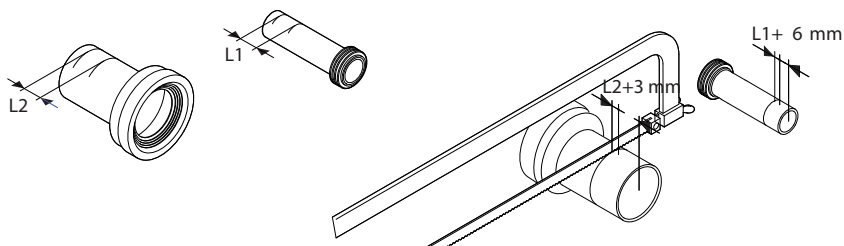


Laissez au moins 3 mm entre le connecteur et le mur, et entre le manchon et le mur

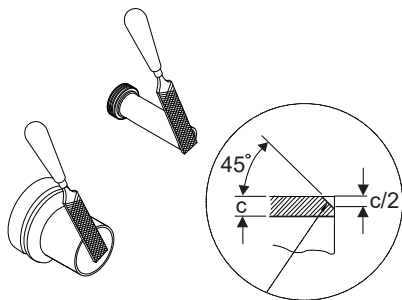
## 10. Montage du WC



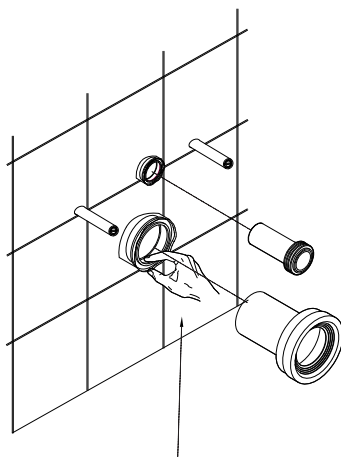
Marquez le tuyau d'arrivée d'eau et le tuyau d'évacuation d'eau



Coupez les tuyaux d'arrivée et d'évacuation d'eau

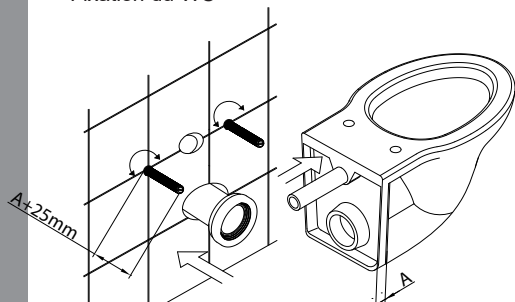


Limez l'extrémité des tuyaux d'arrivée et d'évacuation d'eau



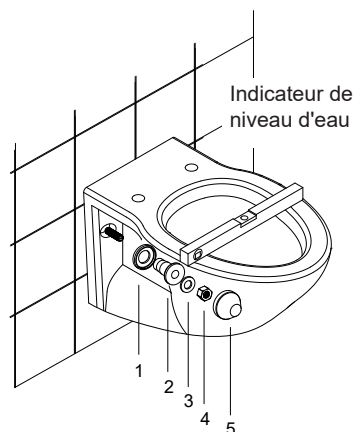
Utilisez de la silicone

## Fixation du WC



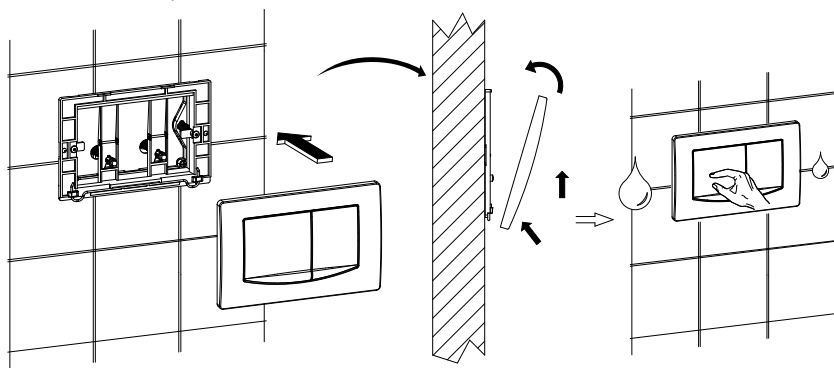
Après avoir enlevé le manchon élastique, ajustez les tiges filetées qui sont accessibles de l'extérieur.

Attachez ensuite le tuyau d'arrivée d'eau au WC et le tuyau d'évacuation d'eau au mur.

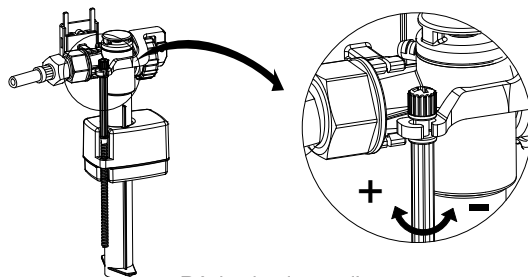


Fixez la tige filetée et alignez le WC dans la position adéquate.

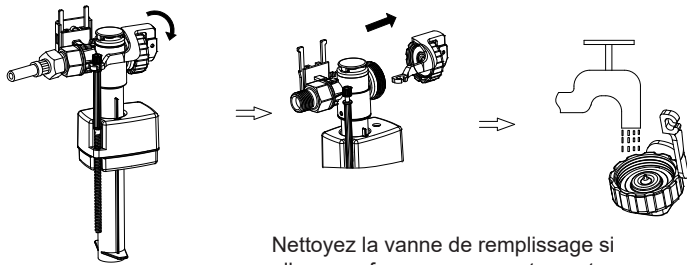
## 11. Installation du panneau de commande



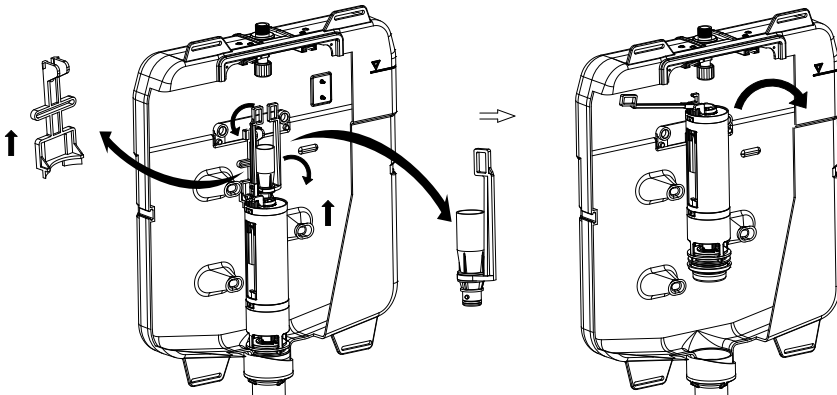
## 12. Entretien des raccords du réservoir



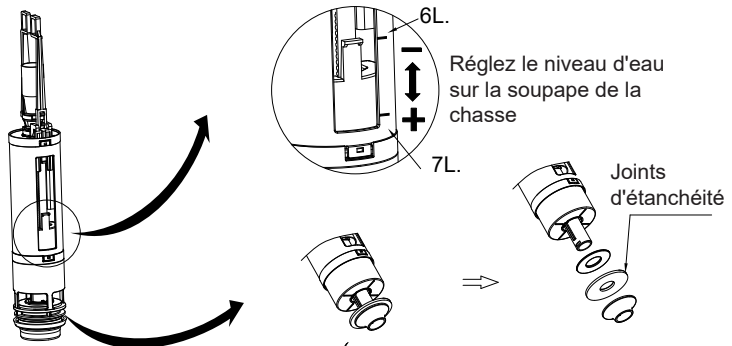
Réglez le niveau d'eau



Nettoyez la vanne de remplissage si elle ne se ferme pas correctement ou si l'arrivée d'eau est lente

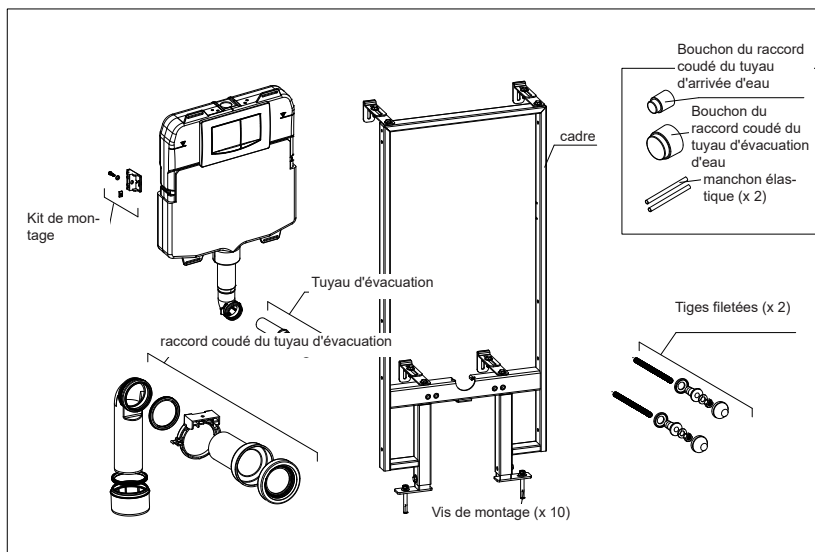
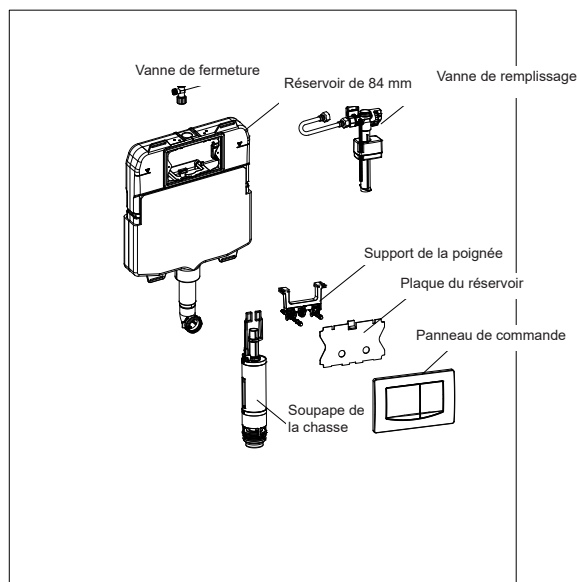


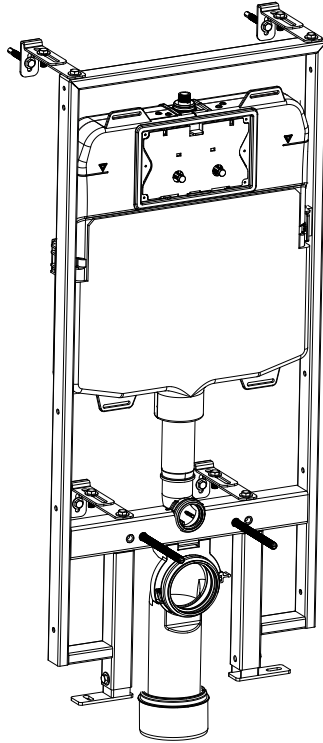
Installation et extraction de la soupape de la chasse



Entretien des joints d'étanchéité

### 13. Pièces détachées



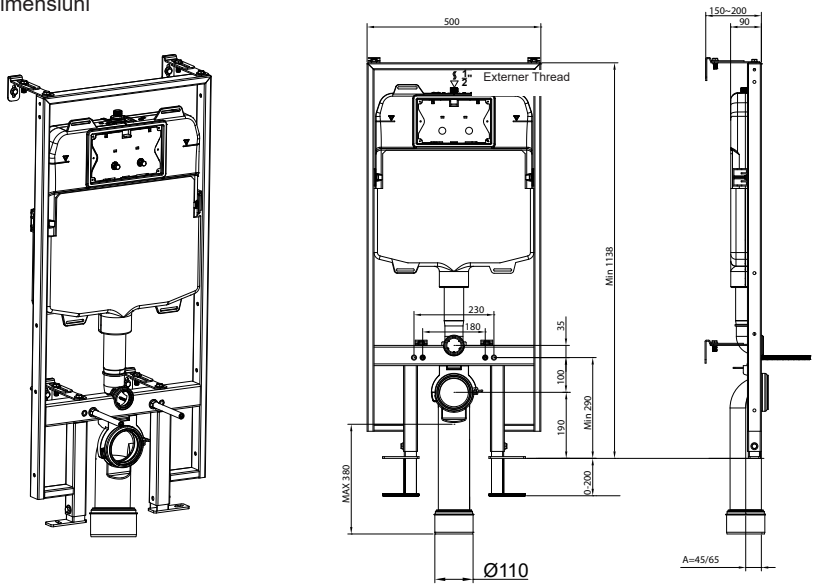


RO

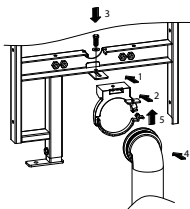
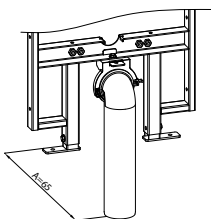
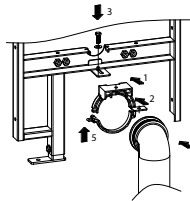
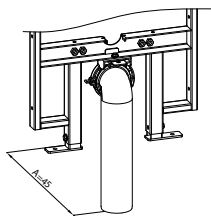
## Rezervor WC încastrat în perete Clarice

### INSTRUCȚIUNI DE MONTARE

1. Dimensiuni

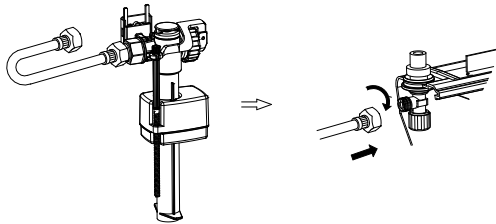
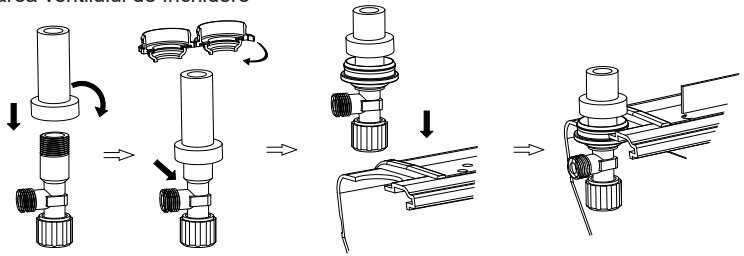


2. Montarea cotului pentru furtunul de spălare

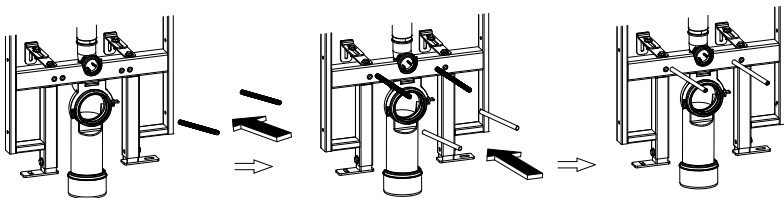




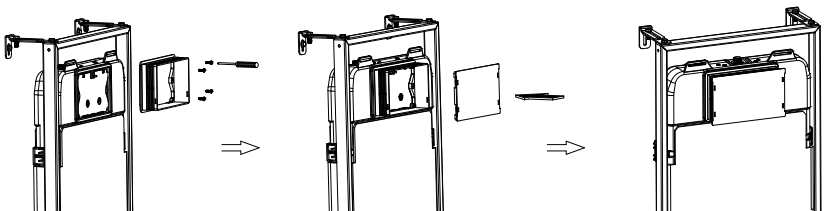
## 5. Montarea ventilului de închidere



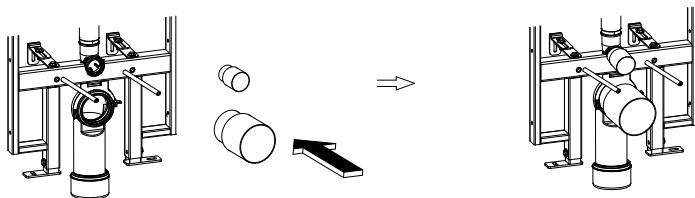
## 6. Montarea tijelor filetate și a piesei de fixare flexibile



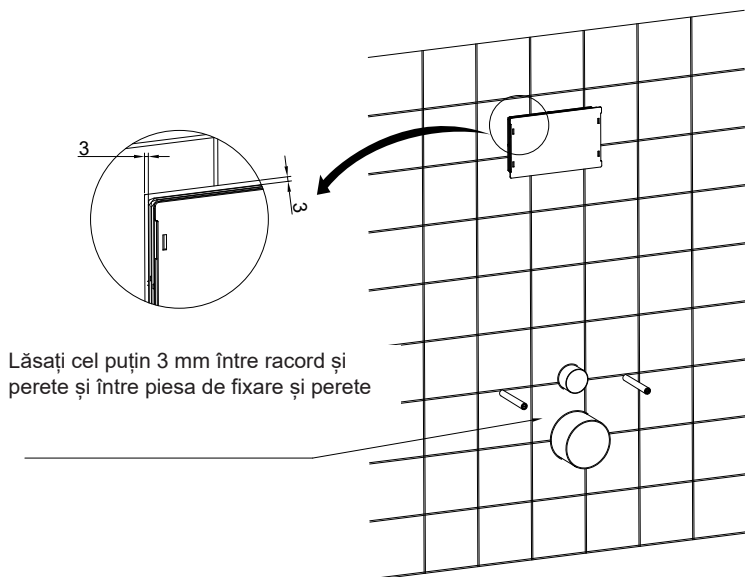
## 7. Montarea capacului de protecție



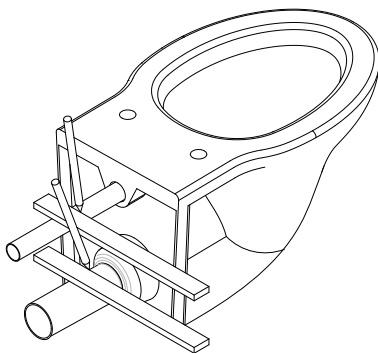
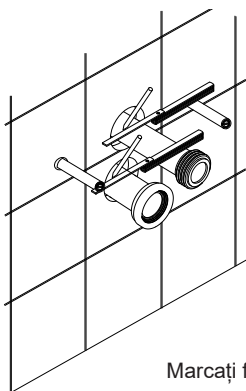
## 8. Montarea dopului pentru cot



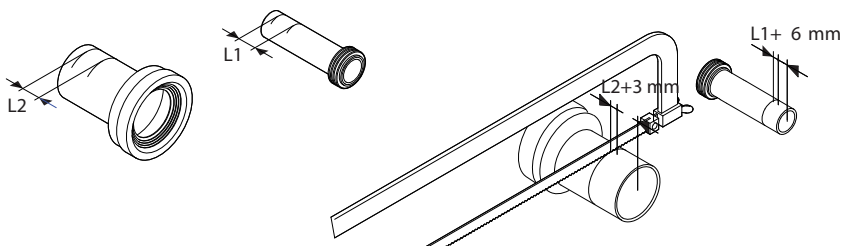
## 9. Construirea peretelui despățitor



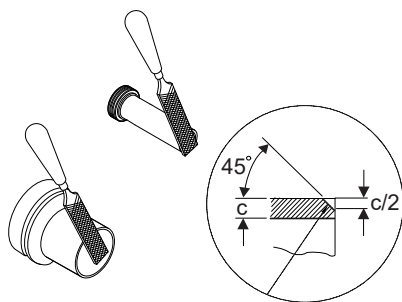
## 10. Montarea vasului WC



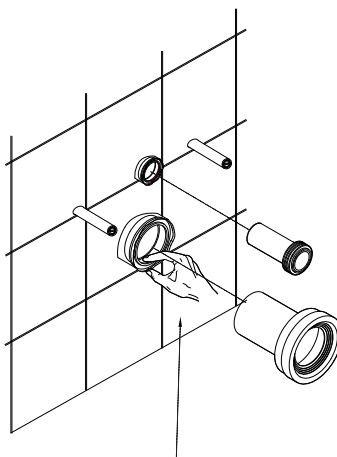
Marcați furtunul de alimentare și spălare



Tăiați furtunul de alimentare și spălare

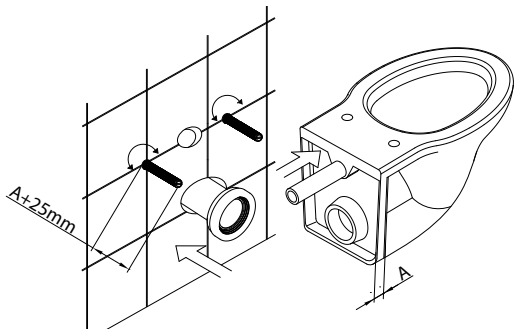


Șlefuiți capătul furtunului de alimentare și spălare

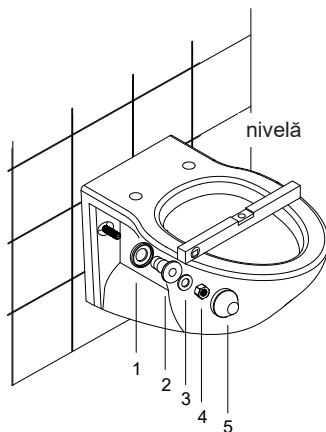


Aplicați ulei silionic

## Fixarea vasului WC

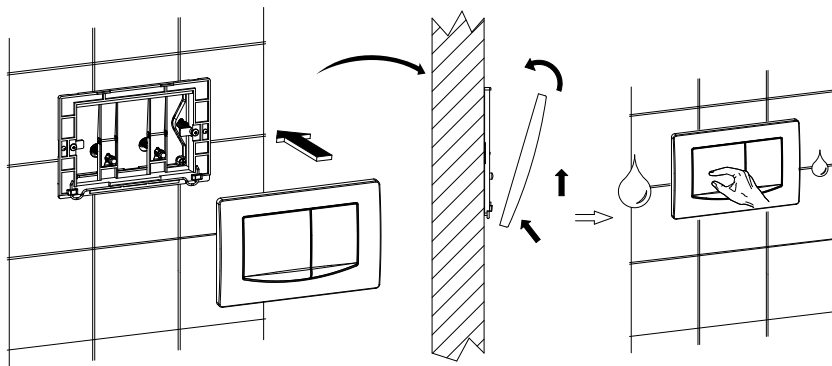


După demontarea piesei de fixare flexibile, reglați tija filetată, la care aveți acces din exterior. Apoi, fixați furtunul de alimentare pe WC, iar cel de spălare pe perete.

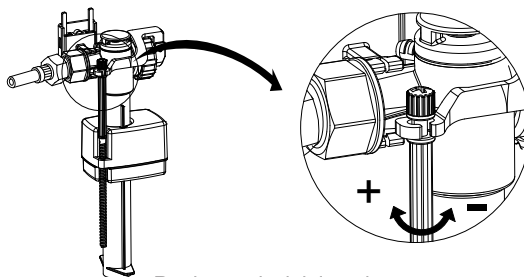


Fixați tija filetată și reglați vasul WC în poziția corespunzătoare.

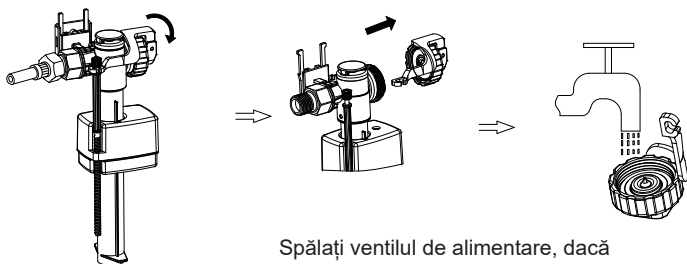
## 11. Montarea panoului de comandă



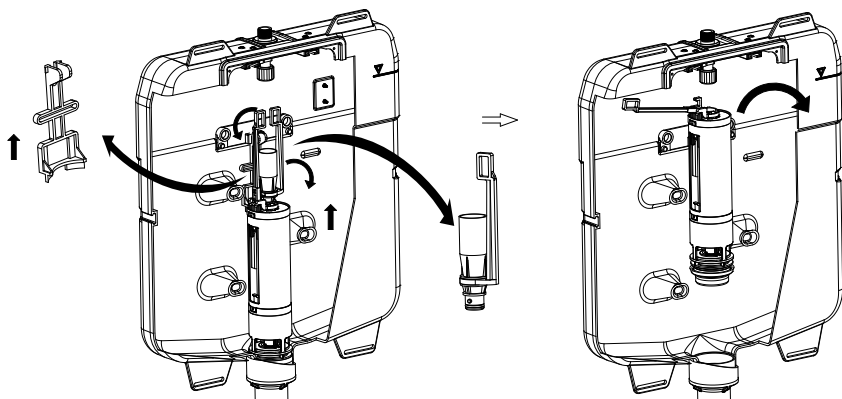
## 12. Întreținerea pieselor rezervorului



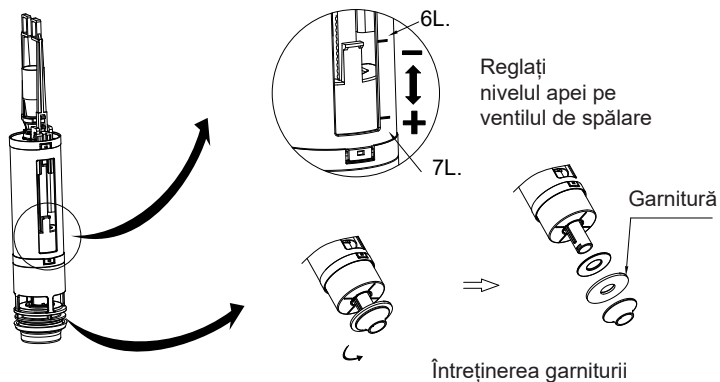
Reglarea nivelului apei



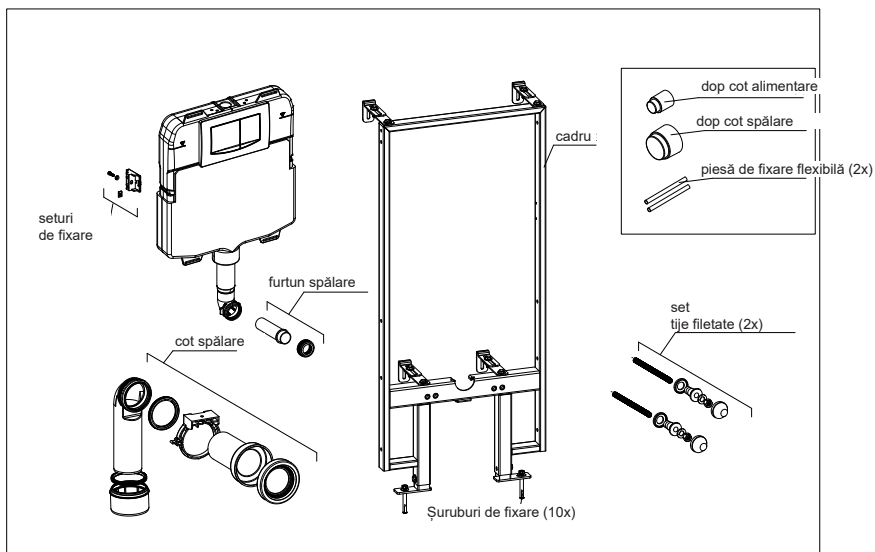
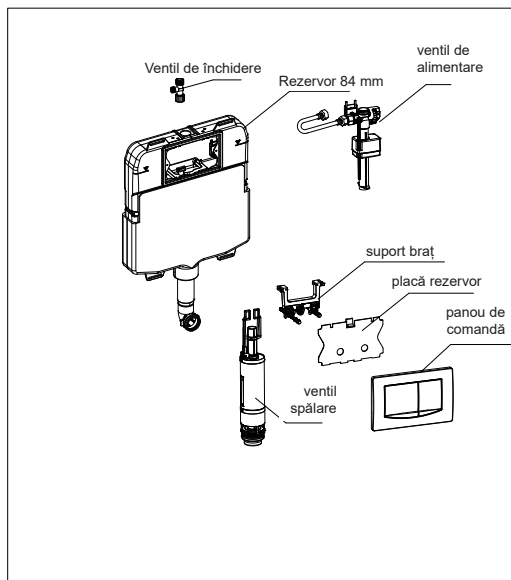
Spălați ventilul de alimentare, dacă umplerea este lentă sau nu se închide corespunzător



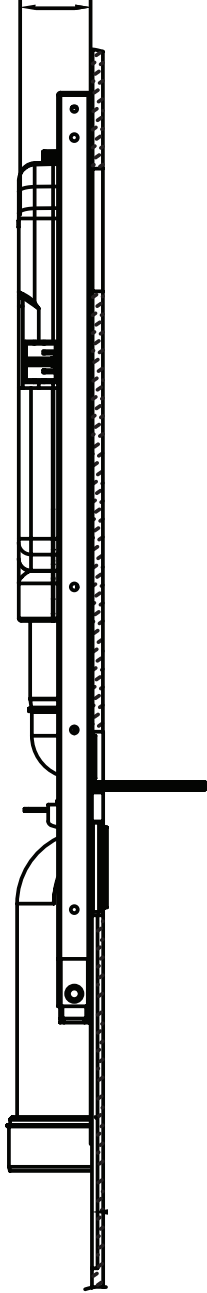
Montarea și demontarea ventilului de spălare

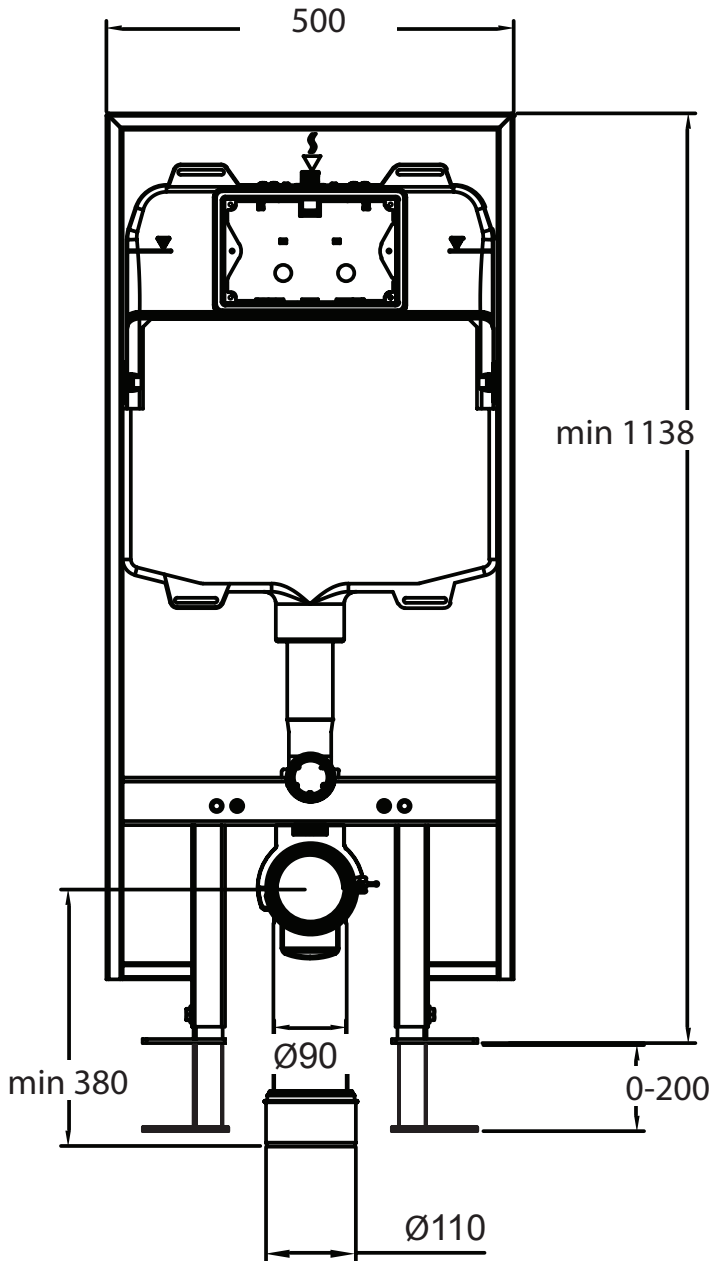


### 13. Piese de schimb



90





Wellis®

CE